



National Geographic Learning Programs for Very Young Learners and Social Emotional Learning (SEL)

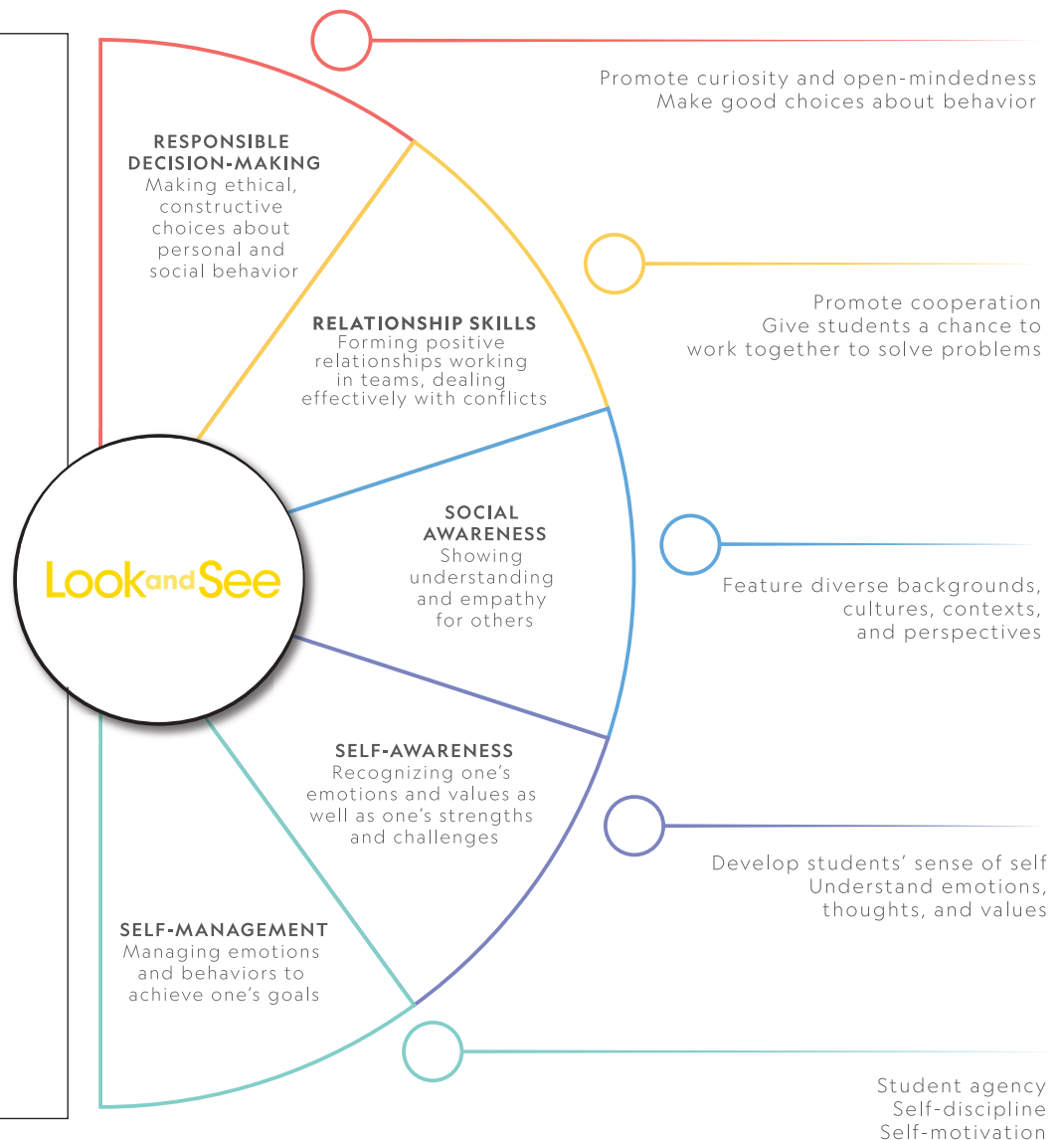
At National Geographic Learning we create English programs that are inspiring, real, and relevant. We believe that learning is a way of living, and that students learn their world by experiencing it through the stories, ideas, photography, and video in our materials.

Our programs develop the skills needed to be confident in the classroom, and to navigate the world as a lifelong learner.

Because we teach English – and we teach the world.

To develop active global citizens, National Geographic Learning materials help young learners to **confidently apply social and emotional skills in English** through materials that feature global content, inspiring National Geographic Explorers, values instruction, and school readiness support.

In preschool, children are developing social skills such as taking turns, sharing toys, making friends, interacting with people outside their family, and even putting on their coats and shoes. The lessons of **Look and See** offer many opportunities to practice the key Social Emotional Learning (SEL) competencies of self-awareness, self-management, responsible decision-making, relationship skills, and social awareness.





Here are some examples of how **Look and See** helps very young learners develop their social emotional skills:

Self-Awareness (About Me) and Self-Management (Taking Care of Myself)



Making Decisions (Responsible Decision-Making)



Look and See promotes self-awareness skills by helping students develop their sense of self and understand emotions, thoughts, and values. **Look and See** also helps develop student agency, self-discipline, and self-motivation.

Look and See promotes responsible decision-making skills by promoting curiosity, open-mindedness, and making good choices about behavior.

Relationship Skills (Working Together)



Social Awareness (The World Around Me)



Look and See promotes relationship skills by promoting cooperation and by giving students a chance to work together.

Look and See promotes social awareness skills by featuring diverse backgrounds, cultures, contexts, and perspectives.